



LAKE COUNTY VECTOR CONTROL DISTRICT

Office 707-263-4770 Fax 707-263-3653
info@lcvcd.org www.lcvcd.org

Ticks

Class Arachnida: Order Acari

There are three commonly encountered hard ticks in Lake County:

- **Western Black-legged Tick (sometimes called the “deer tick”) (*Ixodes pacificus*)**

The adults are usually active from the first fall rains through spring (October through April). This tick is the primary vector of *Borrelia burgdorferi* (the spirochete that causes Lyme disease) in the western United States. On average, about 2% of the adults ticks tested in Lake County are found to carry *Borrelia burgdorferi*, but actual infection rates vary significantly by location and year.

- **Pacific Coast Tick (*Dermacentor occidentalis*)**

This large, brown tick is a three-host tick; the larvae and nymphs commonly feed on rodents, especially squirrels, and the adults feed on cattle, horses, deer, and humans as adults. It can transmit *Rickettsia 364D*, the first human infection with this pathogen was reported in Lake County in 2008 (Shapiro et al. 2010).

- **American Dog Tick (*Dermacentor variabilis*)**

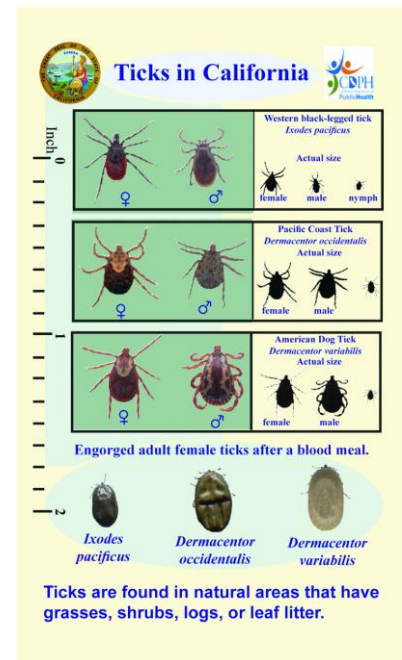
This large, brown tick is a three-host tick that feeds on rodents and rabbits during its larval and nymphal life stages, and large mammals (frequently canids and humans), as adults. It is an important vector of Rocky Mountain spotted fever and also transmits the bacteria that cause tularemia. It may cause tick paralysis.

There is one soft tick common in Lake County:

- **Pajahuello Tick (*Ornithodoros coriaceus*)**



This fast-moving and well-camouflaged tick is found near resting places of its large mammalian hosts (primarily deer and cattle). It will readily take blood from almost any warm-blooded mammal, though. People may accidentally encounter this tick when they come in contact with host bedding sites, especially during activities such as hunting and camping. For humans, the bite of this tick is notoriously painful, and may result in a localized inflammatory response due to a toxic substance introduced into the bite site during feeding.



For more information about ticks or other Lake County insects, please contact
Lake County Vector Control District: 263-4770 www.lcvcd.org